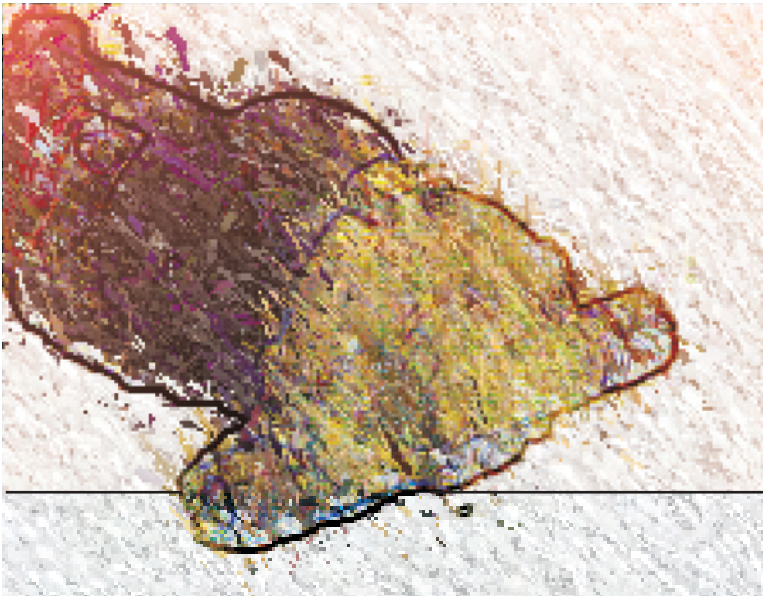


HYDRONIC PUMPS

Magnetic Drive Pumps For Hot Water Recirculation



March May specializes in the design and manufacture of seal-less magnetic drive centrifugal pumps for OEM applications. The company boasts a particularly large range of pumps for hot liquids.

Reliable and Long Lasting

Friction has been significantly reduced and with no seals, liquid cannot seep into the motor from the pump.

High Temperature

The 800 series pumps have been designed to pump liquids up to 176°C.

Efficient and Quiet

Power wasted through frictional loss is significantly reduced which produces an efficient and quiet pumping process.

Easily Maintained

The pump head can be easily dis-assembled and components quickly replaced.

Ex-Stock

Virtually all models are stocked in the UK. The remainder in 3 weeks

Built-in Overload Protection

If overloaded, the magnetic coupling breaks drive to provide protection for the motor from burn-out.

Wetted Materials

821-CI, 869-CI

Cast iron, 316 st/st, Nylon, ceramic, Nitrile/fibre gasket.

821-BR, 830-BR-*-12/24

Bronze, 316 st/st, Ryton, carbon/ceramic, Nitrile/fibre gasket.

809-BR, 815-BR

Bronze, 316 st/st Ryton, carbon/ceramic, silicon O ring.

809-PL, 815-PL

Polysulfil, 316 st/st, Ryton/Teflon, carbon/ceramic, silicon O ring.

830-CI

Cast iron, 316 st/st, Nylon, ceramic, Nitrile/fibre gasket, carbon.



821-BR



809-BR



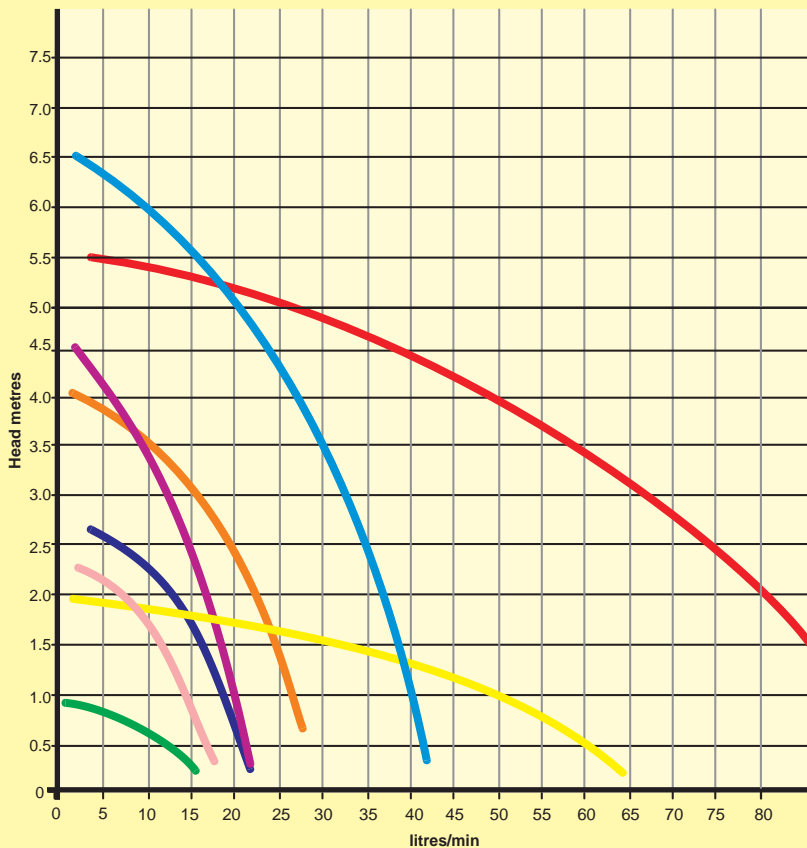
809-BR-HS-C



809-BR-12

PERFORMANCE

50 Hz, SG 1.0 2900 rpm

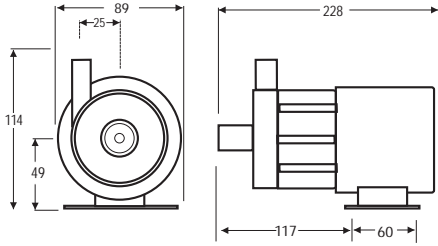


- 821/869
- 830-CI/BR
- 830-BR-T/F 12/24
- 815
- 809-BR/PL-HS-12/24
- 809-BR/PL-HS
- 809-BR/PL-12/24
- 809-BR/PL

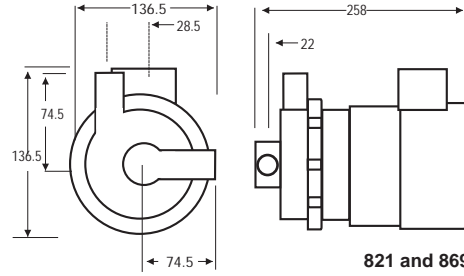
These figures are indicative, please consult March May Ltd for exact performances.

DIMENSIONS

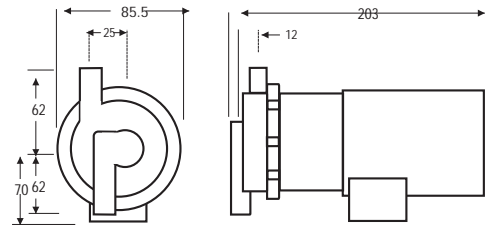
Dimensions in mm not to scale specifications are subject to change



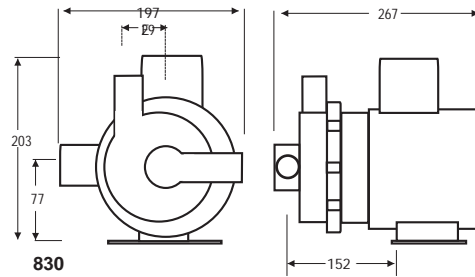
809 and 815 CI



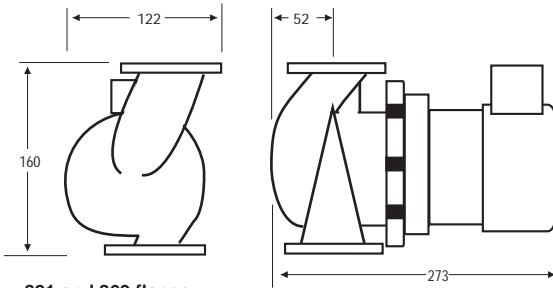
821 and 869



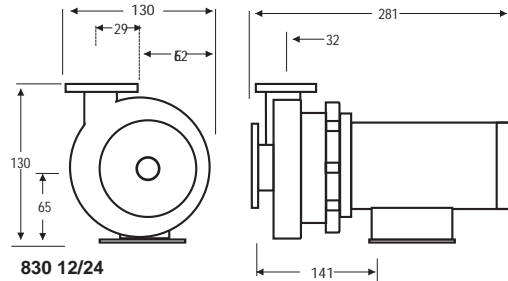
809 and 815



830



821 and 869 flange



830 12/24

TECHNICAL DETAILS

Model	Inlet	Outlet	Motor		Max Pressure	Max Liquid Temp °C
			Voltage	Watts		
809-BR	1/2" MPT	1/2" MPT	230	28	10 bar	121
809-PL	1/2" MPT	1/2" MPT	230	28	3.4 bar	121
809-BR-C	1/2" MPT	3/4" MPT	230	28	10 bar	121
809-BR-12	1/2" MPT	1/2" MPT	12DC	18	10 bar	121
809-BR-24	1/2" MPT	1/2" MPT	24DC	18	10 bar	121
809-BR-HS	1/2" MPT	1/2" MPT	230	103	10 bar	121
809-PL-HS	1/2" MPT	1/2" MPT	230	103	3.4 bar	121
809-PL-HS-C	1/2" MPT	3/4" MPT	230	103	10 bar	121
809-BR-HS-12	1/2" MPT	1/2" MPT	12DC	48	10 bar	121
809-BR-HS-24	1/2" MPT	1/2" MPT	24DC	48	10 bar	121
815-BR	1/2" MPT	1/2" MPT	230	118	10 bar	121
815-BR-C	1/2" MPT	3/4" MPT	230	118	10 bar	121
869-C1	Flange	Flange	230	122	10 bar	176
869-C1-T	3/4" FPT	3/4" FPT	230	122	10 bar	176
830-C1	Flange	Flange	230	350	10 bar	121
830-C1-T	3/4" FPT	3/4" FPT	230	350	10 bar	121
830-BR	Flange	Flange	230	350	10 bar	121
830-BR-T	3/4" FPT	3/4" FPT	230	350	10 bar	121
830-BR-T-12	3/4" FPT	3/4" FPT	12DC	164	10 bar	121
830-BR-F-12	Flange	Flange	12DC	164	10 bar	121
830-BR-T-24	3/4" FPT	3/4" FPT	24DC	151	10 bar	121
830-BR-F-24	Flange	Flange	24DC	151	10 bar	121
821-C1	Flange	Flange	230	122	10 bar	121
821-C1-T	3/4" FPT	3/4" FPT	230	122	10 bar	121
821-BR	Flange	Flange	230	122	10 bar	121
821-BR-T	3/4" FPT	3/4" FPT	230	122	10 bar	121



830-BR-F-12



821-BR-T



815-PL-C



821-CI-T

893 DC PUMPS

893 pumps are compact and extremely reliable magnetically driven pumps for use in situations where space is at a premium.

Manufactured from resistant plastics and stainless steel.
Available with a range of 12 or 24 volt DC motors.

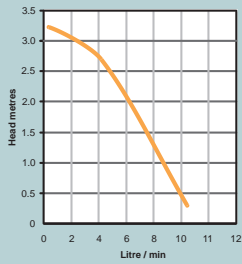
Will fit into confined spaces.
Will withstand temperatures up to 90°C .

Minimal heat transfer from the motor into chilled liquids.
Extremely quiet.

Reliable and long lasting.

Easy to service.

Manufactured from food grade materials.



Inlet Port: 3/8" FPT
Outlet Port: 3/8" OD
Motor Power: 11 Watts

Motor Life: Brush-less 50,000 hrs.
Brushed 3,000 hrs.

Wetted Components:
Noryl, ceramic, Teflon, Stainless Steel, Buna

OTHER PUMPS

March May offers probably the largest range of magnetic drive pumps in the UK.



Large centrifugal
For aggressive chemicals.



Multi stage centrifugal
For mild or aggressive liquids.



single stage centrifugal
stainless steel ATEX rated



Single stage turbine
For mild or aggressive liquids.



Submersible centrifugal
For milder liquids.



Rotary vane
stainless steel ATEX rated