



EMD

Efficient Magnetic Drive Chemical Pumps

COMPACT EFFICIENT RESISTANT

EMD- 4, EMD-5

March May EMD Series pumps have a compact design, and high chemical resistance. They offer leak free pumps that can be used in a wide range of applications that require relatively high flows at low heads in enclosed spaces.

Features

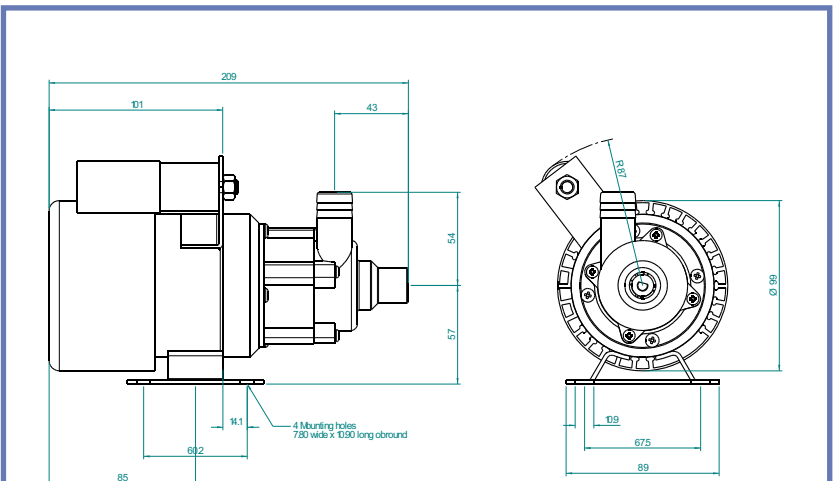
- Encapsulated impeller magnet.
- Polypropylene pump housing and impeller.
- Magnetically driven.
- High grade ceramic Shaft and thrust washer.
- Viton 'O'ring standard
Options: Nitrile, EPDM.
- Continuous rated 50/60 Hz motor.
- Ports, BSP or Smooth

BENEFITS

- Energy efficient performance.
- Resistant to a wide range of chemicals.
- Easy to maintain.
- Will fit into small spaces.
- No leakage.
- Offers very low running costs.



Pump shown **EMD - 4, EMD - 5**



Specifications for **EMD - 4, EMD - 5**

Dimensions in mm specifications are subject to change

Model	Max flow L/min	Max head Metres	Height mm	Width mm	Length mm
EMD 4	25	1.4	142	112	209
EMD 5	35	2.3	142	112	209
EMDsp 4	22	1.3	112	89	209
EMDsp 5	32	2.1	112	89	209

Ports: To suit 1/2" BSP, 3/4" barbed push fit.
 Motor protection : IP20, IP44 (other ratings available).
 Pump housing: Polypropylene.
 Impeller: Polypropylene.

