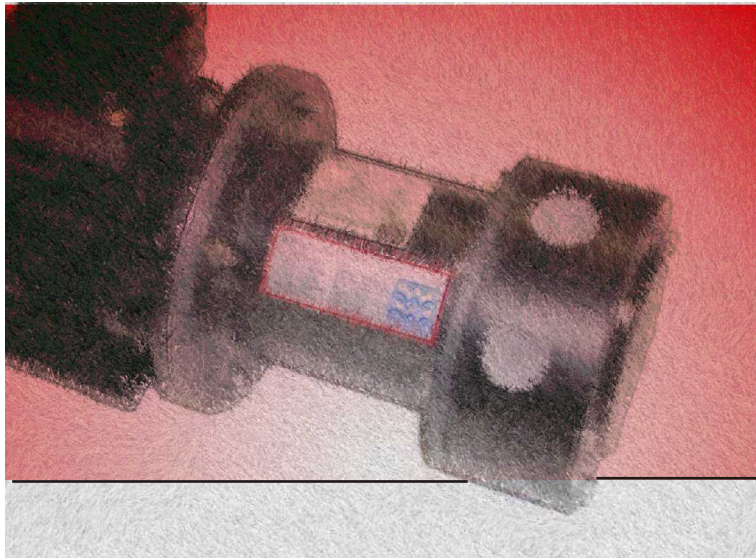


PTM Pumps

Magnetic Drive Turbine Pumps For Aggressive Chemicals



Single stage regenerative turbine pumps machined from polypropylene or PVDF. To offer robust pumps capable of generating high pressures

Reliable and Long Lasting

With no shaft seals, liquid cannot seep into the motor from the pump.

Chemically Resistant

Due to the range of construction materials a wide range of aggressive liquids can be pumped.

High Heads

Both pump ranges will pump against a high system resistance.

Self Priming

Self priming versions of the PTM 2.5x7.5, PTM 2.5x8, PTM 2.5x6.5, PCM 4x13, PCM 5x16 and PCM 6.7x17 are available.

Vertical Mounting

Most PTM and SDM pump models can be mounted vertically with the pump at the lowest point.

Low NPSH

As turbine pumps, PTM units require only a low NPSH.

Caster Equivalent

PTM pumps will directly replace Caster MT pumps. - see rear for details.

Short Lead times

Most PTM pumps are available within a 2-3 week lead time.

Design Flexibility

PTM pumps are available with a range of different drive magnets and motors to cope with high SG and viscous liquids.

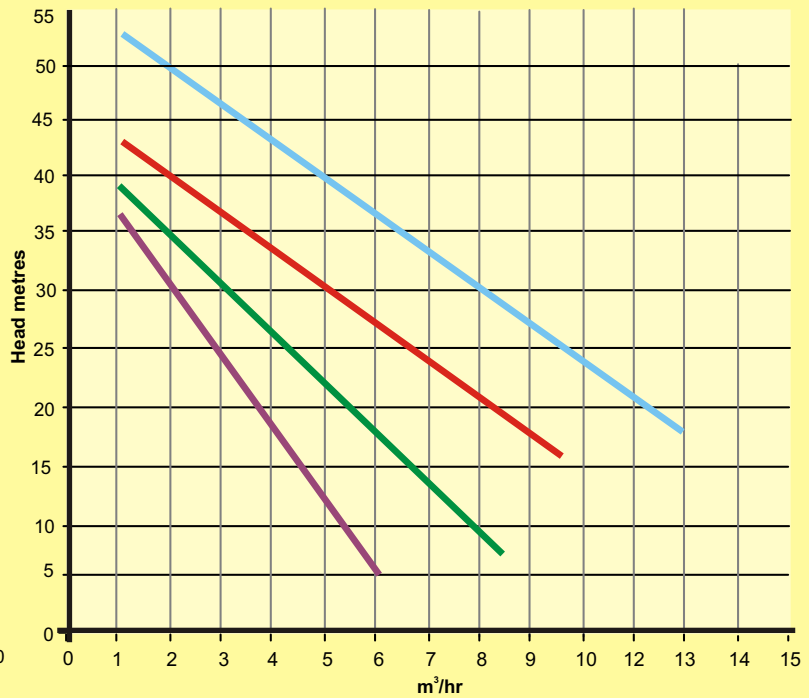
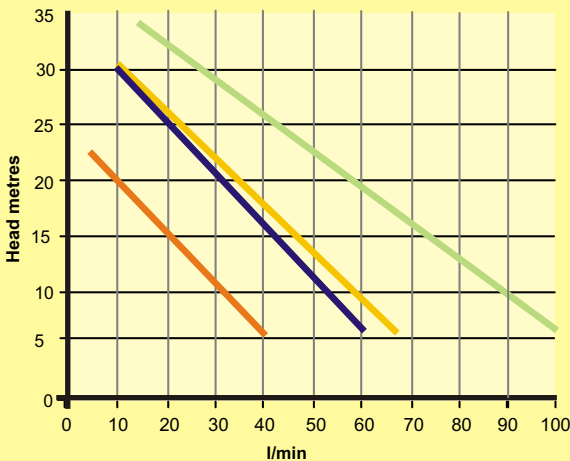


All versions of the pumps can be ATEX approved to Equipment Category 2, (Gas Zone 1 and Dust Zone 21) and temperature rating T4.

PERFORMANCE

50 Hz, SG 1.0 2900 rpm

- PTM 3x10
- PTM 3x9
- PTM 2.5x8
- PTM 2.5x7.5
- PTM 2.5x7
- PTM 2.5x6.5
- PTM 2.5x6
- PTM 2x5

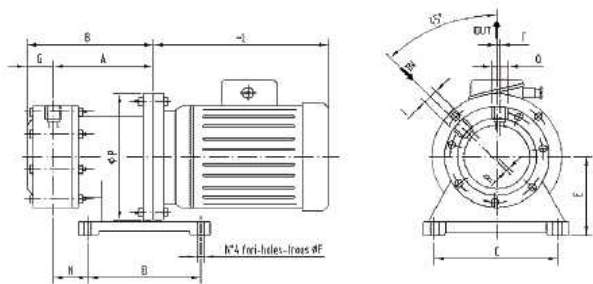


All figures are indicative, please consult March May Lt for exact performances.

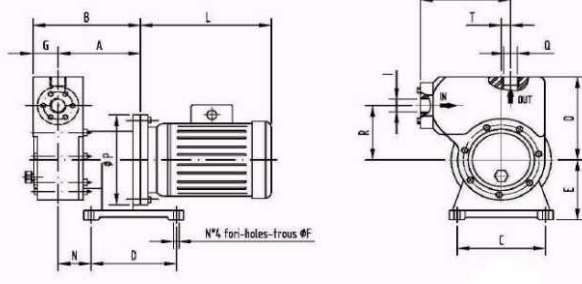
DIMENSIONS

Dimensions in mm not to scale specifications are subject to change

PTM



PTM-sp

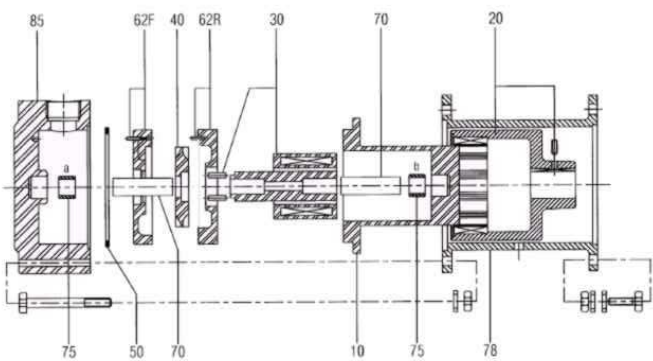


Model	Inlet mm-"	Outlet mm-"	A mm	B mm	C mm	D mm	E mm	F mm	G mm	L mm	M mm	N mm	O mm	P mm	R mm	S mm	T mm	Kw 2 pole
PTM 2x5	20 - 3/4"	20 - 3/4"	144	182	112	90	71	7	38	210	100	45	111	160	4	90	4	0.55
PTM 2.5x6	25 - 1"	25 - 1"	144	182	112	90	71	7	38	210	111	45	117	160	3	101	3	0.55
PTM 2.5x6.5	25 - 1"	25 - 1"	157	197	125	100	80	9	40	230	112	50	127	200	3	127	3	1.1
PTM 2.5x7	25 - 1"	25 - 1"	157	197	125	100	80	9	40	230	112	50	127	200	3	127	3	1.1
PTM 2.5x7.5	25 - 1"	25 - 1"	191	237	155	193	136	12	46	270	117	73	142	200	5	106	5	1.50
PTM 2.5x8	25 - 1"	25 - 1"	191	237	155	193	136	12	46	270	117	73	142	200	5	106	5	2.2/3
PTM 3x9	32 1 1/4"		223	275	220	250	175	14	52	340	140	65	166	250	7	123	7	4.00
PTM 3X10	32 1 1/4"		245	289	250	290	200	16	44	402	149	71	179	300	7	132	7	5.5/7.5

Model	Inlet mm - "	Outlet mm - "	A mm	B mm	C mm	D mm	E mm	F mm	G mm	L mm	M mm	N mm	O mm	P mm	R mm	S mm	T mm	U mm	Kw 2 pole
PTM-sp 2,5 x 6,5	25 1"	25 1"	157	197	125	100	80	9	40	230	172	50	170	200	108	218	17	216	1.1
PTM-sp 2,5 x 7,5	25 1"	25 1"	191	240	155	193	136	12	49	270	209	73	227	200	152	255	4	273	1.5
PTM-sp 2,5 x 8	25 1"	25 1"	191	240	155	193	136	12	49	270	209	73	227	200	152	255	4	273	2.2-3
PTM-sp 3 x 10	32 1/4"	32 1/4"	245	305	250	290	200	16	60	402	255	71	260	300	170	308	22	315	5.5-7.5

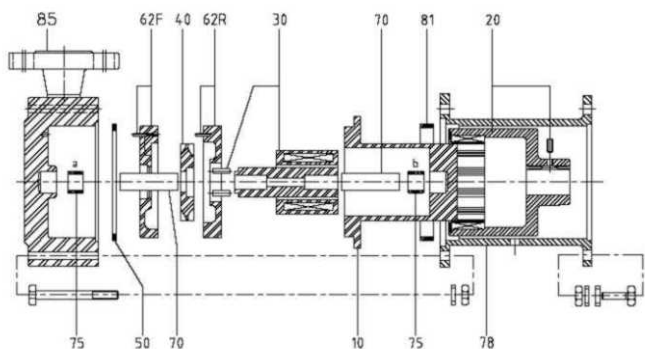
TECHNICAL DETAILS

PTM Standard



Ref	Description	Standard	Optional
10	Rear Casing	Polypropylene	PVDF
20	Drive magnet	Neodymium	
30	Impeller Magnet	Polypropylene	PVDF
40	Impeller	PVDF	
50	O Ring	EPDM	Viton, FEP
62F	Front Ring	Polypropylene	PVDF
62R	Rear Ring	Polypropylene	PVDF
70	Shaft	Ceramic	
75	Bearings	PTFEC	
78	Bracket	Polypropylene	
85	Front Casing	Polypropylene	

PTM ATEX



Ref	Description	Standard	Optional
10	Rear Casing	PVDF	
20	Drive magnet	Neodymium	
30	Impeller Magnet	Polypropylene	PVDF
40	Impeller	Polypropylene	PVDF
50	O Ring	EPDM	Viton, FEP
62F	Front Ring	Polypropylene	PVDF
62R	Rear Ring	Polypropylene	PVDF
70	Shaft	Ceramic	
75	Bearings	PTFEC	
78	Bracket	Polypropylene	
81	Rub Ring	Bronze	
85	Front Casing	PVDF	

Caster Equivalent

Virtually all March May PTM pumps are interchangeable with the original MTA range.

Caster		March May	
MT 3003	PP	PTM	2 x 5 PP
MT 3003	PV	PTM	2 x 5 PV
MT 5002	PP	PTM	2,5 x 6 PP
MT 5002	PV	PTM	2,5 x 6 PV
MT 5003	PP	PTM	2,5 x 6,5 PP
MT 5003	PV	PTM	2,5 x 6,5 PV
MT 7002	PP	PTM	2,5 x 7 PP
MT 7002	PV	PTM	2,5 x 7 PV
MT 7003	PP	PTM	2,5 x 7,5 PP
MT 7003	PV	PTM	2,5 x 7,5 PV
MT 9000	PP	PTM	2,5 x 8 PP
MT 9000	PV	PTM	2,5 x 8 PV
MT 12000	PP	PTM	3 x 9 PP
MT 12000	PV	PTM	3 x 9 PV
MT 16000	PP	PTM	3 x 10 PP
MT 16000	PV	PTM	3 x 10 PV

OTHER MAGNETIC DRIVE PUMPS

March May offers probably the largest range of magnetic drive pumps in the UK.



Large centrifugal
For aggressive chemicals.



single stage centrifugal
stainless steel ATEX rated
For milder chemicals



Single stage centrifugal
For milder chemicals.



Multi stage centrifugal
For mild or aggressive
liquids.



Brass centrifugal
For high temperature
liquids.



Single stage turbine
For mild or aggressive
liquids.



Submersible centrifugal
For milder liquids.

