



POMPA TIPO
PUMP TYPE
POMPE TYPE

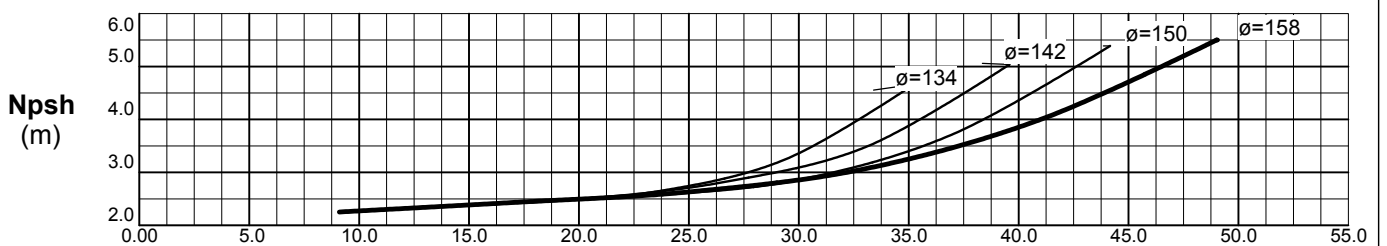
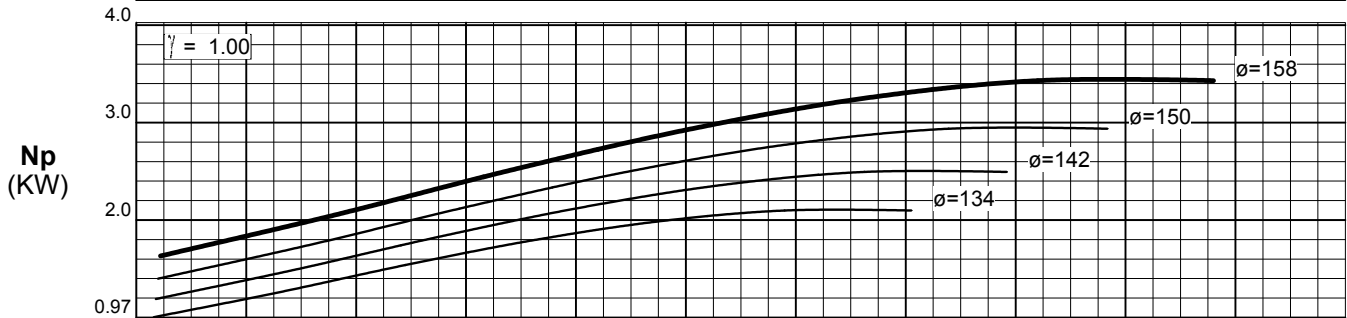
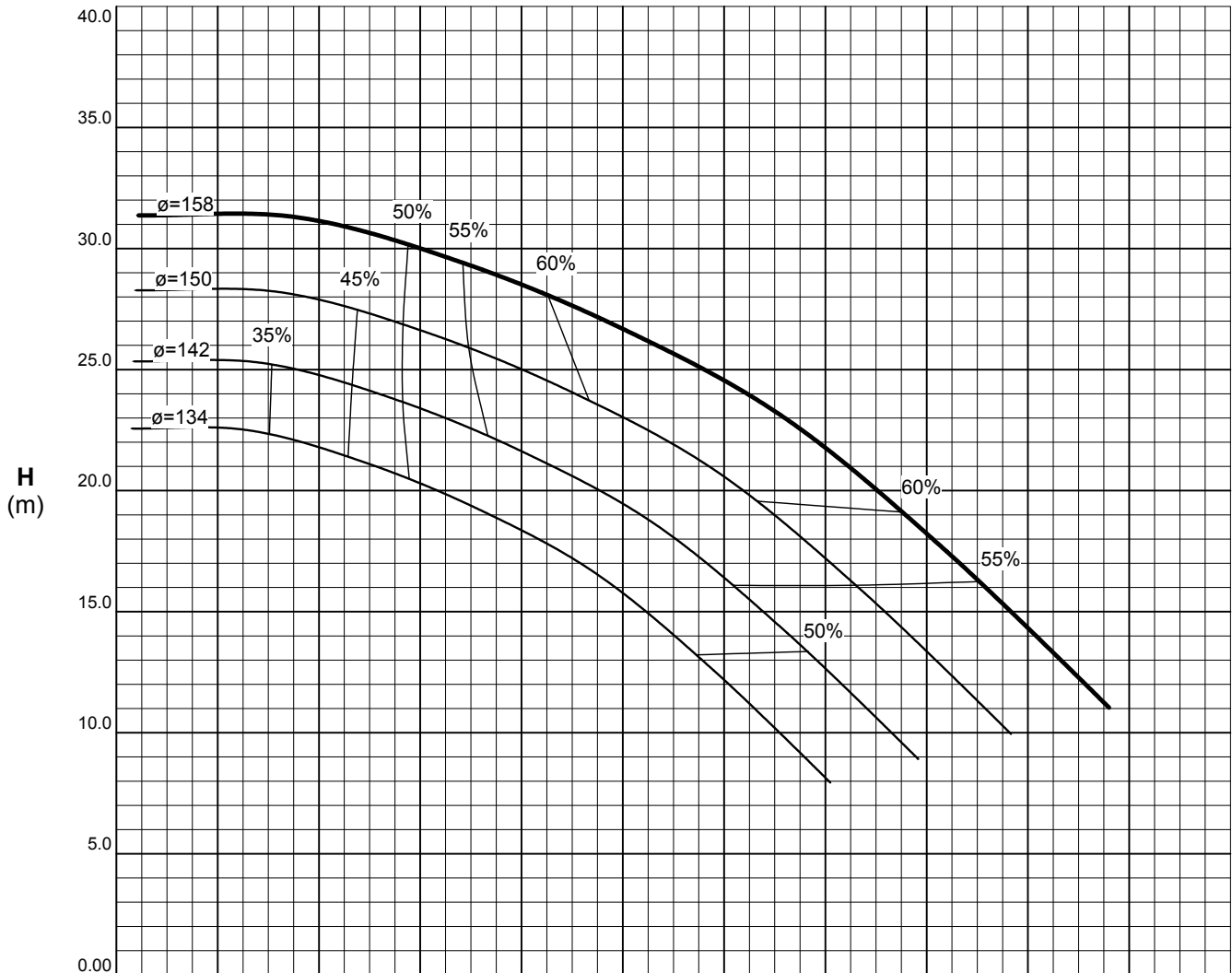
PCM 5x16

CURVA N.
CPC4AA2A

DATA 17/03/2005 DIS. AS

M
 K

Dati richiesti Duty point Données contrac.	Q: *** (m3/h)	H: *** (metri)	n: 2900
	Np: *** (KW)	Nm: *** (KW)	Hz: 50



:Portata Q :Capacity :Debit	:Prev. man. tot. H :Total man. head :Hauteur manom. tot.	:Potenza ass. pompa Np :Pump absorbed power :Puissance abs. pompe	:Potenza nom. motore Nm :Motor nominal power :Puissance nom. moteur	:Giri/min n :R.P.M. :Tours/min	:Rendimento pompa η :Pump efficiency :Rendement pompe	:Peso spec.(kg/dm3) γ :Specific gravity :Poids spécifique
--	---	--	--	---	--	--

Tolleranze - Tolerances - Tolerances : Standard ISO 9906 annex A



POMPA TIPO
PUMP TYPE
POMPE TYPE

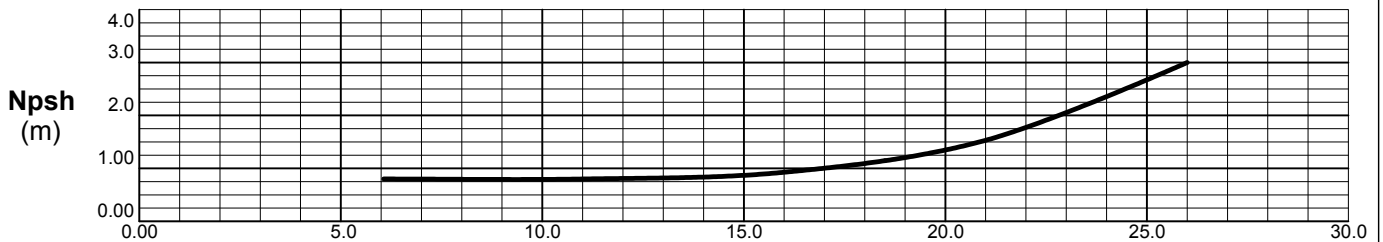
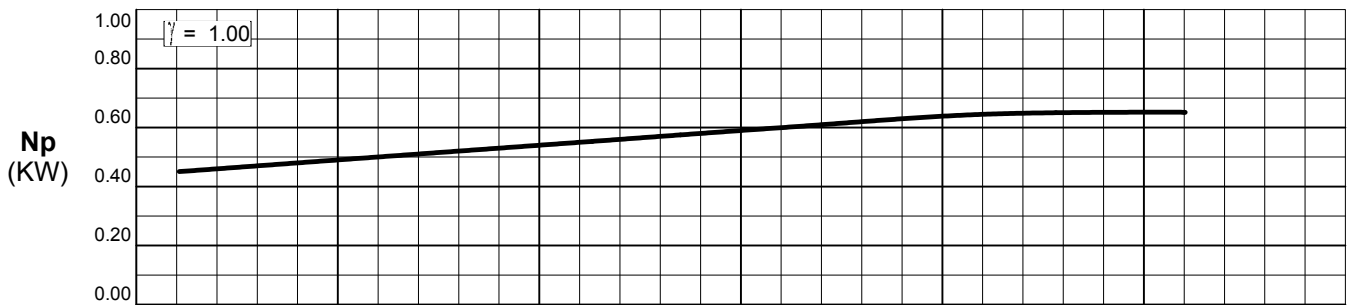
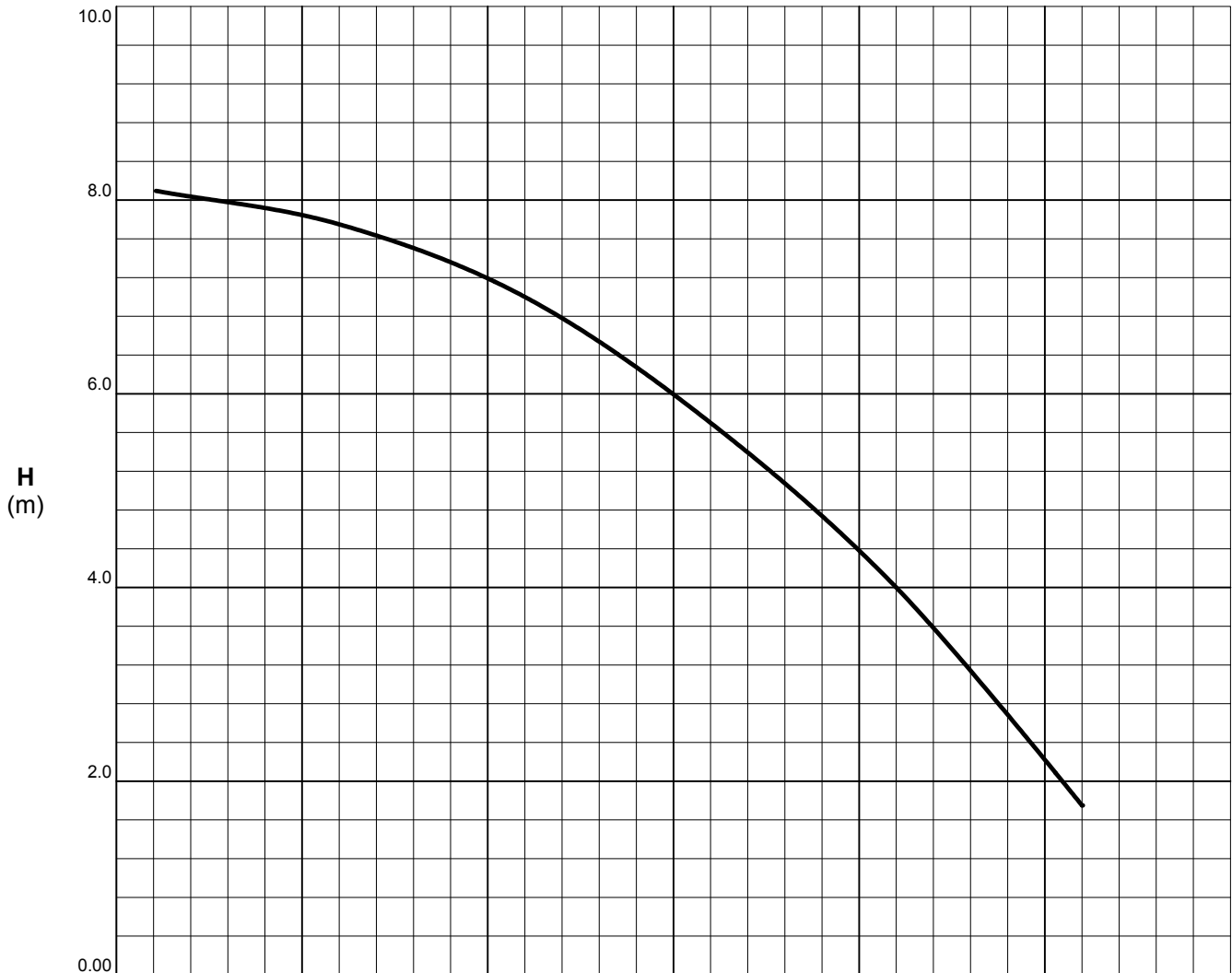
PCM 5x16

CURVA N.
CPC4AA4A

DATA 23/02/2005 DIS. RM

M
K

Dati richiesti Duty point Données contrac.	Q: *** (m3/h)	H: *** (metri)	n: 1450
	Np: *** (KW)	Nm: *** (KW)	Hz: 50



Q (m3/h)

:Portata Q :Capacity :Debit	:Prev. man. tot. H :Total man. head :Hauteur manom. tot.	:Potenza ass. pompa Np :Pump absorbed power :Puissance abs. pompe	:Potenza nom. motore Nm :Motor nominal power :Puissance nom. moteur	:Giri/min n :R.P.M. :Tours/min	:Rendimento pompa η :Pump efficiency :Rendement pompe	:Peso spec.(kg/dm3) γ :Specific gravity :Poids spécifique
--	---	--	--	---	--	--

Tolleranze - Tolerances - Tolerances : Standard ISO 9906 annex A