



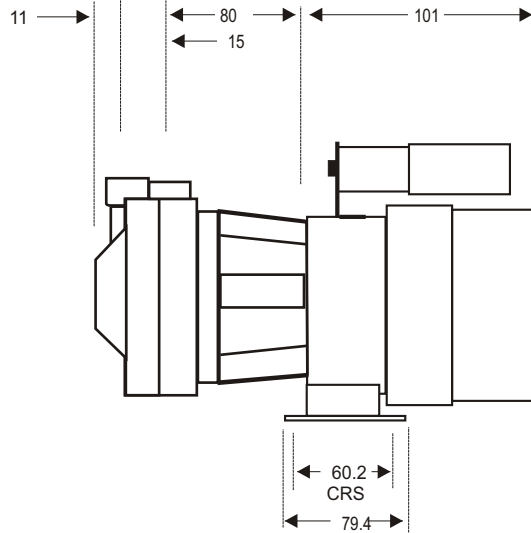
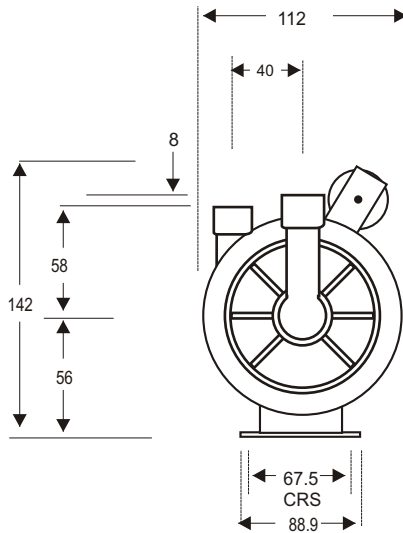
MMP-1

DIMENSIONAL SCHEMATIC, PERFORMANCE AND PARTS LIST

DIMENSIONS mm

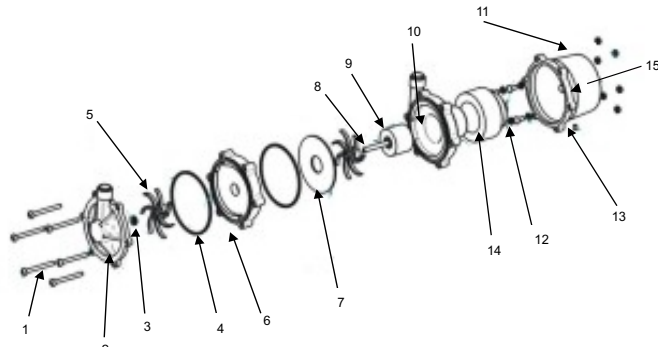
not to scale
specifications are subject to change

Ports: 3/8" BSP female



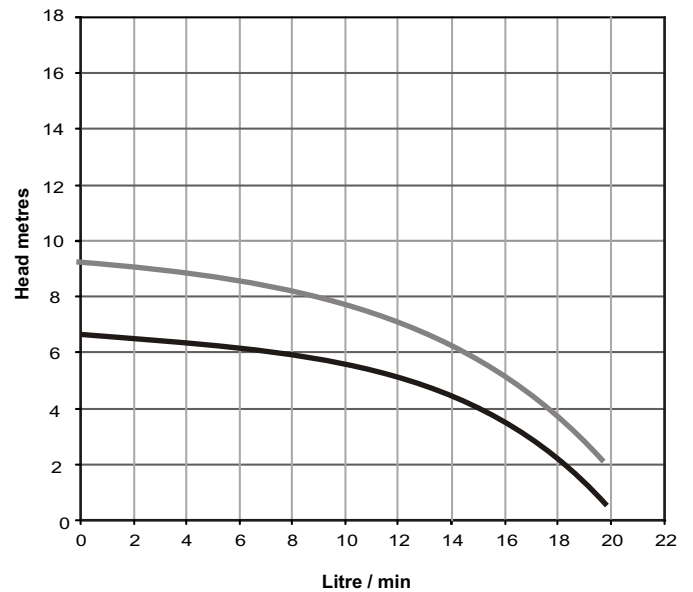
Details may change depending upon the motor specified

PARTS LIST



ITEM	DESCRIPTION	NOS	CODE
1	BRACKET IXEF	1	5021-170-11
2	DRIVE MAGNET ASSY FERRITE.IXEF	1	5021-201-11
3	PUMP HOUSING (BLUE)ACETAL	1	5021-140-10
4	"O" RING NITRILE (FQ)		5021-123-30
5	IMPELLER MAGNET FERRITE/PPS	1	5021-191-08
6	SPINDLE CERAMIC	1	0130-024-UK
7	WASHER -THRUST CERAMIC	1	0130-028-UK
8	FRONT COVER (BLUE) ACETAL	1	5021-110-10
9	IMPELLER PPS		5021-130-08N
	WET END ASSY ITEMS 3-8 INCLUSIVE FIXINGS	1	5021-101-10
A	BRKT/MTR SCREW PANHD M4 x 12 SS	4	5021-220-50
Aa	WASHER S/PROOF M4 SS	4	0858-004-UK
2a	SOC/SET SCREW M5 x 6 STL	2	5021-500-56
B	PUMP BRKT SCREW M5 x 35 SS	6	5021-210-50
Bb	FULL NUT M5 x SS	6	5021-180-50

PERFORMANCE



Tests obtained with water 1.0 SG
 — 50 hz 2900 rpm
 — 60 hz 3400 rpm